

Animal House

Bruce Gernand

These sculptures continue a preoccupation with the representation of animal form, both for its own sake and as a way of extending sculptural practice. I find inspiration in our wide cultural heritage from the neolithic onwards and recognize our contemporary relationship to animality as alienated by comparison with earlier cultures' more fundamental and intimate connections. As a consequence it seems more honest, though perhaps less straight forward, to represent animal form through its absence. So, presented here are, in effect, plaster moulds, traditional devices for preserving and replicating an original form, some of which are modelled in clay, others generated on the computer using a faceting technique. The fluidity of animal form is contained by the plaster mould -- the "animal house" -- which resonates with an architectural sensibility, fossil sedimentations and sarcophagi.



*All works are from 2012
Made in reinforced crystacal R plaster*

Animal House 1, 56cm length



2

Animal House 3, 48cm length



Animal House 5 (Mycenae), 32cm length



Animal House 2, 77cm length





Animal House 4 (Aquamanile), 60cm length

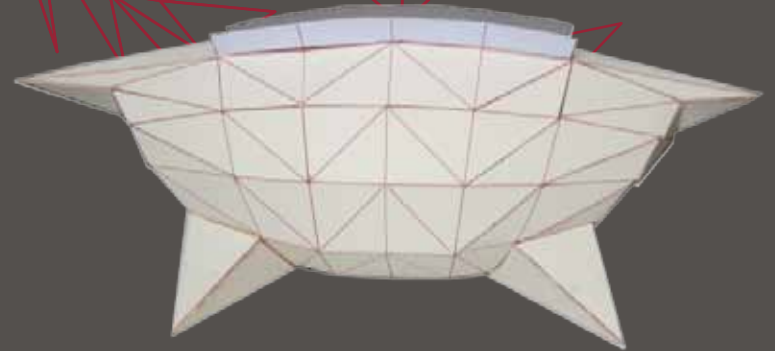


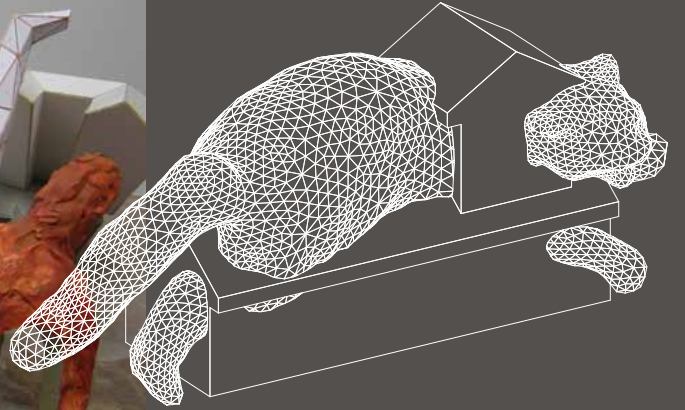
for related works:

<http://www.brucegernand.com/project7a.php>

<http://www.brucegernand.com/project10a.php>

<http://www.brucegernand.com/project9a1.php>





6 SKETCHES, STUDIES, PRELIMINARIES